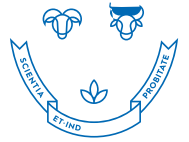


Lincoln University
Areas of Specialisation



TE WHARE WĀKAPA O AORAKI

Environment and Sustainability

Welcome

Lincoln University is proud to help grow your future.

As the longest running agriculturally based university in the Southern Hemisphere, Lincoln's story begins with farming but it certainly doesn't end there. As New Zealand's economy has diversified so have we. What we are interested in growing is people.

Now more than ever, we are enabling our students to grow to meet urgent industry demands in areas such as food, fibre, sustainability, agribusiness and more.

At Lincoln, we offer great learning and growth through powerful applied research, deep industry collaborations, global connections and world-class learning environments and teaching.

As a Lincoln graduate you'll arrive at your career globally connected, forward thinking and ready to shape tomorrow.

Lincoln is a safe haven that will offer you a wealth of opportunities to develop leading-edge skills here and in the real world. Just as importantly, you will become part of a thriving and inclusive student community, forging friendships that will last a lifetime.

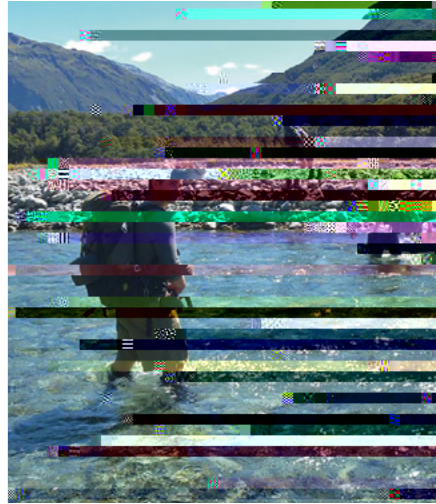
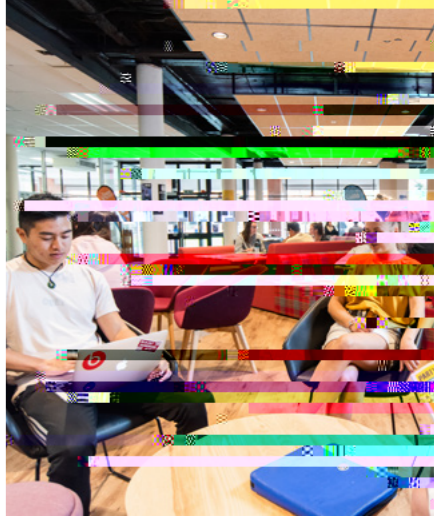
We truly look forward to helping you grow.

Contents

Lincoln and the Canterbury region	02
Why Lincoln University?	03
Lincoln at a glance	04
Areas of specialisation & qualifications	05
Lincoln University's areas of specialisation	06
Environment and Sustainability	07
Bachelor of Commerce (Sustainability)	08
Bachelor of Environmental Management	10
Bachelor of Environmental Policy and Planning (with Honours)	05
Bachelor of Science (Agriculture)	



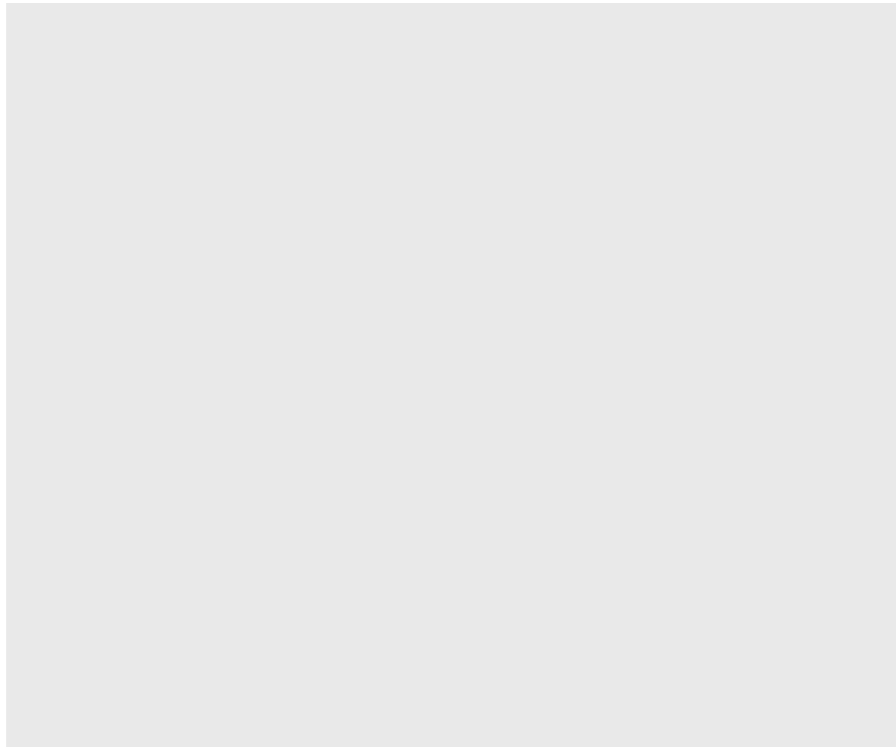
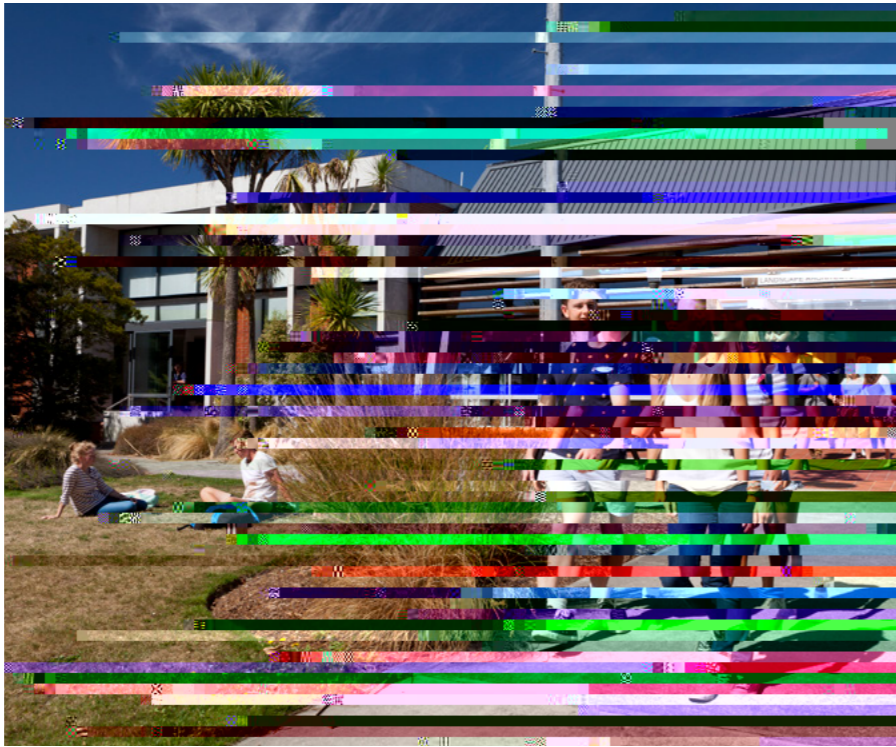
Photos: ChristchurchNZ



Lincoln at a glance

<p>Major links and collaborations with industry, iwi and research centres</p> <p>~ -</p>		

Areas of specialisation & qualifications



This programme
will develop
graduates
with a sound
foundation
in commerce
coupled with an
understanding

Bachelor of Environmental Management



The Bachelor of Environmental Management is for you if you're passionate about environmental issues and want to make a difference. Covering content across the physical and social sciences, the degree explores the crucial connections between environmental, social, economic and cultural issues.

It will give you the ability to address urgent global and local environmental challenges in a range of careers.

Key features

-

Duration (Years)

3

Intake (Semesters)

1 2



Bachelor of Environmental Policy and Planning (with Honours)

What is the role of the
environmental planner?
What are the challenges?
What are the opportunities?
What are the future prospects?
What are the ethical considerations?
What are the policy implications?
What are the legal implications?
What are the social implications?
What are the economic implications?
What are the cultural implications?
What are the political implications?
What are the international implications?
What are the global implications?
What are the local implications?
What are the regional implications?
What are the national implications?
What are the continental implications?
What are the world implications?
What are the future implications?
What are the past implications?
What are the present implications?
What are the future prospects?
What are the challenges?
What are the opportunities?
What are the future prospects?
What are the challenges?
What are the opportunities?

4



Programme contacts

Shannon Page
Degree Co-ordinator
E: shannon.page@lincoln.ac.nz
P: 03 423 0436



For more information or to apply
visit www.lincoln.ac.nz or call 0800 10 60 10.

Bachelor of Science (Conservation and Ecology)



Lincoln has opened up a lot of opportunities for me and the small size means it's easy to stay in contact with lecturers. The practical side of the courses are a major benefit. There are some unique courses and great professors.

Joel Faulkner
Bachelor of Science
(Conservation and Ecology)

Bachelor of Science (Environmental Science)



The degree is designed to give you a firm grounding in all of the appropriate sciences relating to the natural environment and our effects on it. You will learn about natural processes in soil and water and understand the effects of land use, with the aim of protecting and restoring the environment for future generations.

You can complement these studies with elective courses relating to the economy, society, and environmental science to specialise to suit your goals.

Key features

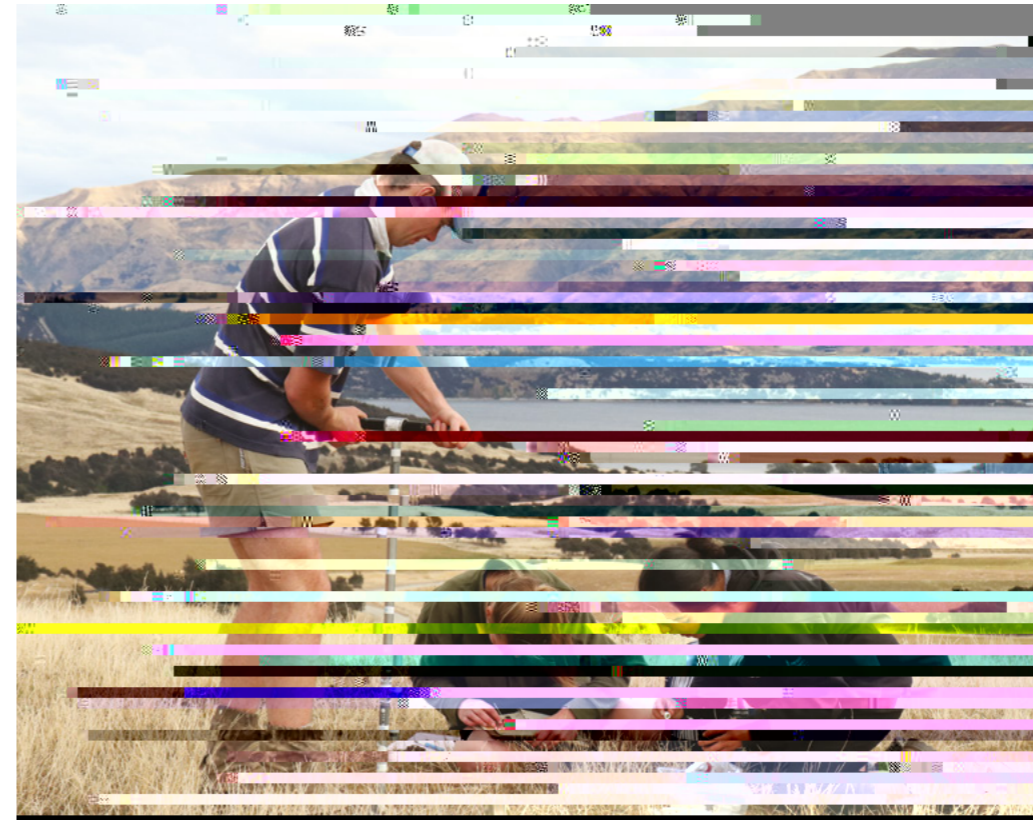
- Gain the scientific skills to contribute to the economy,

Duration (Years)

3

Intake (Semesters)

1 2



Bachelor of Sustainable Tourism



Addressing urgent global sustainability challenges is at the heart of the Bachelor of Sustainable Tourism.

Post-pandemic considerations are changing the future of the sector and experts are needed to develop sustainable tourism systems.

Key features

- Understand tourists as consumers and how this influences demand and sustainable tourism systems
- Understand the dynamic environments in which sustainable tourism exists
- Develop your knowledge of sustainable tourism products, structures, operations and interactions in Aotearoa New Zealand and internationally

Duration (Years)

3

Intake (Semesters)

1 2



Additional majors



Accounting

Develop the accounting-based knowledge and skills to pursue a wide variety of business careers. This major will massively increase your employability, especially when coupled with a core business major. Learn to evaluate accounting issues in a business environment, use the latest tools and techniques to solve accounting problems and prepare and analyse accounting and finance reports.

The Accounting major consists of eight courses: one 100-level course, four 200-level courses and three 300-level courses. Courses selected at the 300-level for the major cannot be applied to any other qualification.

Facilities Management

Gain a sound understanding of building form, function, materials, maintenance, processes and corporate legislation. You will be equipped with the knowledge and skills required to develop and manage complex portfolios of real estate assets.

The major consists of eight courses, three at 100-level, two at 200-level and three at 300-level.

Economics

Use economics to solve real-world problems and gain the expertise to help address a range of global issues. You'll develop the ability to quantitatively analyse New Zealand value chains (from primary production to end consumers), a skill that is highly sought-after by employers.

The Economics major consists of eight courses: two 100-level courses, three 200-level courses and three 300-level courses. Courses selected at the 300-level for the major cannot be applied to any other qualification.

Environmental Management

This major is strongly aligned with Agriculture, Environmental Science, Tourism Management, Land and Property Management, Landscape Architecture and Recreation Management. If you're studying for one of these degrees, this major will provide you with essential environmental management skills, leading to employment in the profession.

The public and political interest in environmental issues across a broad range of industries, along with increased media coverage, is likely to increase the importance of the environment in employers' minds and

create more careers for people with environmental management skills.

This major consists of eight courses, which is one-third of a 24-course degree. At least three of the courses are at the 300-level and no more than three can be taken at the 100-level. Courses selected at the 300-level cannot be applied to any other qualification.

Event Management

Gain the expertise to pursue a career as an event professional in a range of industries. Event management is a growing area of specialisation at tertiary institutions throughout Australasia and the world. The significance of events has spread beyond the traditional realm of tourism, sport and the arts into the corporate world and a range of other sectors, including hospitality and wine and food production. Corporations, organisations and local councils appreciate the value that events and festivals bring to businesses and local economies as they help to facilitate their role in encouraging community development and engagement.

The Event Management major consists of eight courses – three 100-level courses, two 200-level courses and three 300-level courses. Courses selected at the 300-level cannot be applied to any other qualification.

Finance

Finance lies at the heart of business operations and is a dynamic field within the modern global economy. Develop the advanced knowledge and skills to become a finance expert so that when you join the workforce, you can effectively adapt to a rapidly changing business environment. As New Zealand becomes more dependent on global value chains, greater numbers of university graduates will be required in many industries.

The Finance major consists of eight courses: three 100-level courses, two 200-level courses and three 300-level courses. Courses selected at the 300-level for the major cannot be applied to any other qualification.

Global Business

Learn the management techniques required to run global organisations. Develop leadership and strategy skills and have the option of specialising in international marketing, international economics, or business sustainability management.

An emphasis on internationalisation of management, as well as management functions in multinational corporations, will offer employment opportunities all over the world.

The Global Business major consists of eight courses: two 100-level courses, three 200-level courses and three 300-level courses. Courses selected at the 300-level for the major cannot be applied to any other qualification.

Marketing

Develop the expertise to make the right marketing decisions for businesses, consumers, society and the environment. Become aware of the profession's social, ethical, moral and legal standards and their impact on society. You'll learn the concepts and tools to be a productive and responsible marketing professional.

The Marketing major consists of seven courses: two 100-level courses, two 200-level courses and three 300-level courses. Courses selected at the 300-level for the major cannot be applied to any other qualification.

Parks and Outdoor Recreation

The major in Parks and Outdoor Recreation is a multidisciplinary programme bringing together areas of social and ecological science to give a holistic approach to this field of study, equipping students for public and private sector roles in parks and reserves management, visitor services, recreation policy and planning or nature-based tourism.

This major consists of eight courses, which is one-third of a 24-course degree. Courses selected at the 300-level cannot be applied to any other qualification.

The Department of Conservation

(DOC) is offering a number of \$5,000

scholarships for students pursuing a degree in Parks and Outdoor Recreation.

For more information, visit www.doc.govt.nz.

DOC is offering a number of \$5,000 scholarships for students pursuing a degree in Parks and Outdoor Recreation.

For more information, visit www.doc.govt.nz.

DOC is offering a number of \$5,000 scholarships for students pursuing a degree in Parks and Outdoor Recreation.

Choose an
additional major

Environmental Scientist

Kaip taiao Ao T roa

Environmental scientists study human effects on the environment such as climate change, pollution and loss of biodiversity. They also advise on how to avoid or reduce these harmful effects.



Pay per year
\$58k - \$150k



Job opportunities
Good
due to strong demand



This profile is abridged from the CareersNZ website. For a more detailed profile, visit www.careers.govt.nz/jobs-database/animal-care-and-conservation/conservation/environmental-scientist/

Pay

Pay for environmental scientists varies depending on skills, experience and they type of work they do.

- Graduate environmental scientists usually start on about \$58,000 to \$91,000 a year.
- Senior environmental scientists with a Masters and five years' experience can earn up to \$108,000.
- Environmental scientists with a postdoctoral degree who work at research institutes can earn from \$85,000 to \$150,000.

What you will do

Environmental scientists may do some or all of the following:

- Study plants and animals in their environment
- Assess sources of soil, water and air pollution, and develop ways to control these
- Use computer modelling techniques to predict future events in the ecosystem
- Study soil types and suitable fertilisers
- Study how to alter soils to suit different plants
- Develop efficient irrigation, drainage and waste disposal methods
- Plan and run field studies and experiments
- Prepare reports on the environmental impacts of activities such as mining, forestry and agriculture
- Report results of studies in science journals and in conferences
- Study and develop environmental policies
- Provide technical advice to clients or local government authorities
- Prepare applications for resource consent on behalf of clients, in compliance with the Resource Management Act.

Working conditions

Environmental scientists:

- Usually work regular business hours, but may be required to work weekends and evenings to meet deadlines
- Usually work in offices, but may work outdoors when collecting samples or visiting sites
- May travel nationally and overseas to work on projects.

Entry requirements

To become an environmental scientist you usually need to have a Master's degree in one of the following areas, depending on your specialisation:

- Environmental science or a related area such as chemistry or engineering
- Ecology or a related area such as botany or zoology
- Soil science or a related discipline such as earth science.

A PhD is usually required for research-based positions.

Personal requirements

Environmental scientists need to be:

- Accurate
- Able to make good judgements
- Good at problem solving
- Good at planning and organising
- Good at communicating
- Creative, so they can develop new ideas.

What are the chances of getting a job?

Strong demand for environmental scientists

Chances of getting work as an environmental scientist are good because the Government has made climate change a priority but there is a shortage of environmental scientists.

Demand for environmental research is growing because of increased pressure on the environment from population growth, urban expansion and the effects of industry.

Environmental research scientist appears on Immigration New Zealand's long-term skill shortage list. This means the Government is actively encouraging skilled environmental scientists from overseas to work in New Zealand.

Good opportunities in a range of industries

There are good opportunities for environmental scientists with a policy or evaluation focus to work for primary sector industries on land or at sea, regional and local councils, and government environmental ministries and agencies.

There is high demand for environmental scientists who can monitor the impacts of industrial activities on the environment, manage resource consents, provide advice on minimising environmental footprints, and consult and engage with stakeholders.

Types of employers varied

Environmental scientists who do academic research mainly work for:

- Crown research institutes
- Government departments such as Landcare Research or Department of Conservation
- Universities.

Environmental scientists who do policy or evaluation work may be employed by:

- Regional, city and district councils
- Government departments and Crown entities
-

Growing careers

At Lincoln, growing the future is what we're all about. Meet some of our current and past students, who are well on their way to achieving their dreams.

[Penny Grigg](#)

Bachelor of Environment and Society

Originally from Blenheim, Penny has always wanted to study at Lincoln University.

"Coming from a small town, I thought it seemed like it had a really homey feel and a nice image," she says. "I'm from a rural background anyway, so I didn't see myself anywhere else."

Penny is studying for a Bachelor of Environment and Society, which is a flexible degree that offers a range of diverse perspectives on global, social and environmental challenges.

"I looked at all the agriculture papers and the degree I chose is versatile, meaning I can take a lot of different papers such as bioscience and sociology, so it's a good mix of subjects.

"I especially enjoy lab work and hands-on activities."

She also appreciates the social nature of Lincoln, citing the

Graduate pathways



Katie Collins
Bachelor of Environmental Management; Master of Resource Studies

Freshwater Science Advisor,
Department of Conservation

Even though Katie Collins is from Auckland, having attended Diocesan School for Girls, her mother, aunt and two brothers also studied at Lincoln University. With a natural love of the outdoors, Katie was involved in strong, environmentally-focused educational programmes at school. "These programmes were where my interest in learning more about the environment was fostered, which led me to studying for the Bachelor of Environmental Management."

While at Lincoln, Katie's interest in the environment turned specifically towards water usage, quality and quantity, and freshwater ecology. "I'm also interested in how Māori cultural values interact with ecology and natural resource planning. Upon completing my thesis, I applied for jobs in freshwater policy and monitoring, and my qualifications helped me to land my subsequent roles."

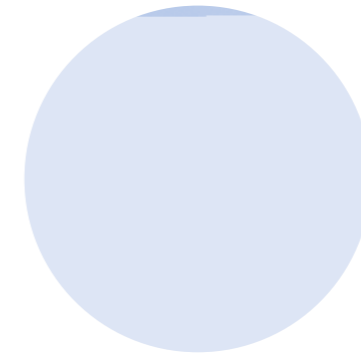
Initially taking up a position at the Auckland Council, Katie worked with the Auckland Plan Natural Environment Chapter, Unitary Plan and the National Policy Statement for Freshwater Management.

She went on to become a Freshwater Science Advisor at the Department of Conservation, eventually gained a PhD in Biological Sciences, and is a highly respected expert in her field.

During her time at Lincoln, Katie became especially interested in water usage, quality and quantity, and freshwater ecology.



I'm also interested in how Māori cultural values interact with ecology and natural resource planning. Upon completing my thesis, I applied for jobs in freshwater policy and monitoring, and my qualifications helped me to land my current role.



Jess Samuels
Bachelor of Environmental Management and Planning

Director | Planner,
Riverside Planning & Projects

The first person in her family to go to university, Jess Samuels was introduced to Lincoln when a Liaison Officer visited her high school, Matamata College.

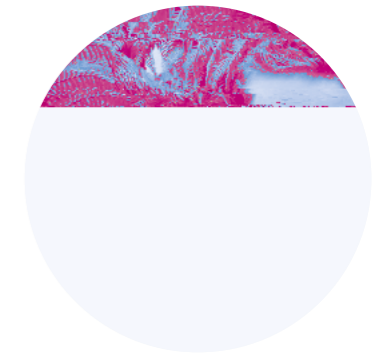
Jess chose Lincoln for several reasons: good reputation, small class size and pretty campus, but most importantly, because of the university's involvement in science and environmental planning courses.

"Planning is a great career for people who want to be involved in shaping New Zealand, as it incorporates environmental, social, cultural and economic factors that influence the way we live. If you enjoy Geography, Science or English, planning conjoins these subjects to make decisions about the urban and rural environments."

While studying at Lincoln, Jess took on four internships over the summer and winter breaks. Two of these were with NIWA on an eel restoration project in the Waikato River, one was with the Raukawa Trust, and the fourth was with the Waikato River Authority.

Since graduating, Jess has worked for various private land development consultancies and iwi post-settlement governance entities.

She now runs her own family-oriented Waikato-based business, Riverside Planning & Projects.



Steve Pawson
Bachelor of Parks, Recreation and Tourism Management; Bachelor of Science (Conservation and Ecology); Master of Applied Science

Senior Lecturer in Entomology,
University of Canterbury

Steve Pawson attended Inglewood High School, and was initially drawn to Lincoln University to study for the Bachelor of Parks, Recreation and Tourism Management. While he was studying, he discovered an interest in conservation and ecology and opted to conjointly study a Bachelor of Science.

"The conjoint programme was very valuable, in that it gave huge breadth to my undergraduate studies, which has given me many skills to draw on in my current career."

Steve furthered his study at Lincoln University with a Master of Applied Science, followed by a PhD. He landed a role as an Entomology Research Leader with Scion, where he managed a research team working on forest pest species. He is currently a Senior Lecturer in Entomology at the University of Canterbury.

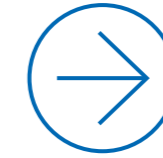
Practical information

Many of our programmes have a practical work component. It's considered a crucial aspect of study for some courses and offers experiences in a broad range of relevant careers.

You'll normally carry out practical work during summer breaks and it will be closely linked to the lecture material in your study programme. While it's your responsibility to find practical work placements, the Practical Work Coordinator can help by putting you in touch with employers who are already connected with us. You're strongly encouraged to seek out a diverse range of practical work opportunities.

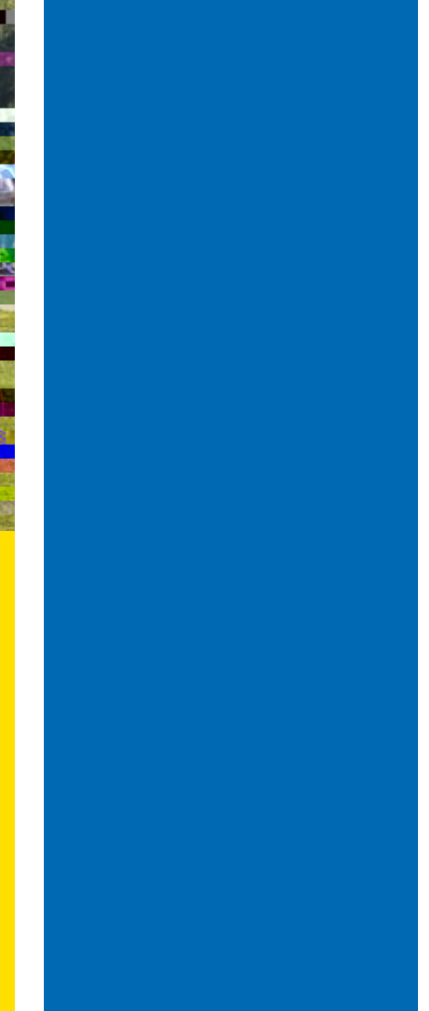
Key Dates and Events

Here are some of the events you won't want to miss as you consider your Lincoln journey.



Information Evenings

Head to a central city venue and enjoy nibbles and beverages



Apply and enrol

Ready.
Set.
Grow.




www.lincoln.ac.nz/apply

[View the Lincoln University campus map at www.lincoln.ac.nz/map](http://www.lincoln.ac.nz/map)

[Disclaimer](#)

